

**The following are
sample pages only.**

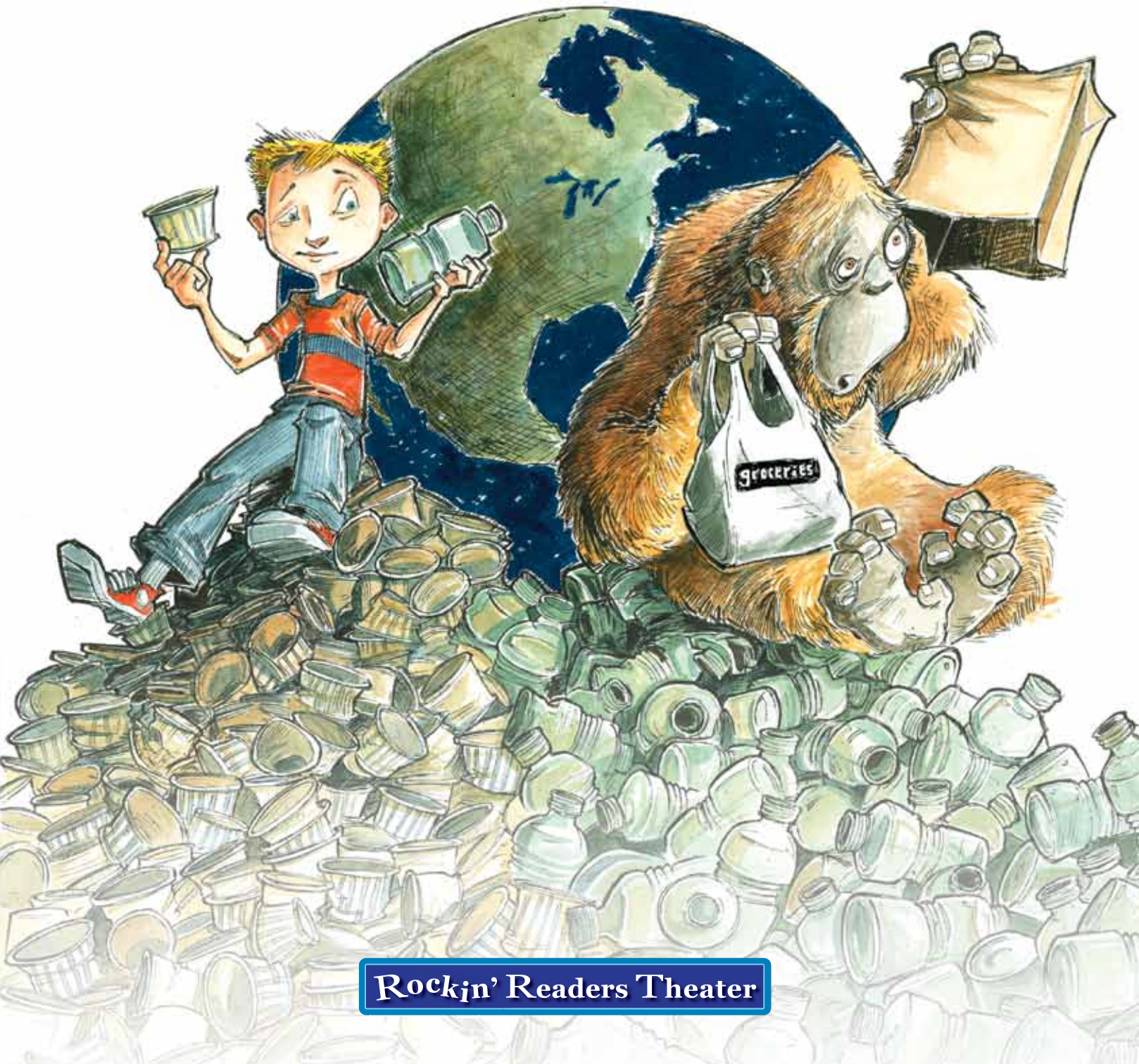
To purchase this product, please contact
Treasure Bay at 1-800-476-6416.

SHEET MUSIC

Paper or Plastic?

A Musical Play
About Protecting Our Environment

Includes piano arrangements, guitar chords, melody line, and lyrics for all five songs in the play

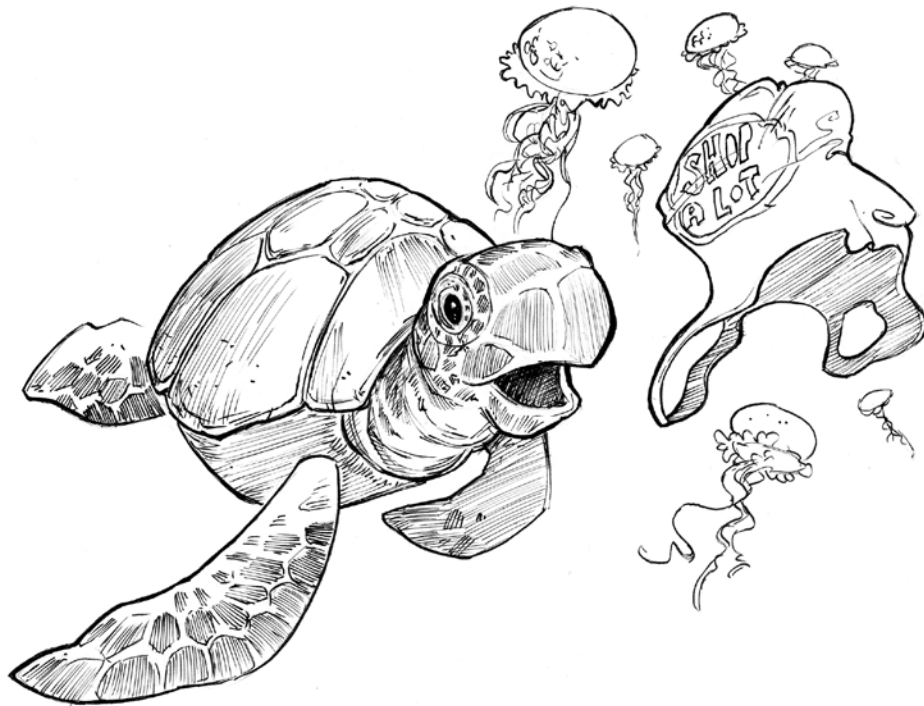


Rockin' Readers Theater

SHEET MUSIC

Paper or Plastic?

A Musical Play
About Protecting Our Environment



Rockin' Readers Theater

Rockin' Readers Theater

Paper or Plastic?

A Musical Play About Protecting Our Environment

Knowledge Is the Key

Music (originally titled *One Way Street* [BR 484 #3])
composed by: Dowd, Louise (PRS) (C); Abbott, Jeremy (PRS) (C)
Publisher: Bruton APM (ASCAP)

We Are All Connected

Music (originally titled *Friends Forever* [KPM 743 #27])
composed by Lane, Marc (PRS) (C); Hatwell, Greg Charles
(PRS) (C)
Publisher: KPM APM (ASCAP)

Toxic Chemical Song

Music (originally titled *Loose Cannon* [CDGML 7600 #22])
composed by Knight, Darcus (PRS) (C); Joy, Otis (PRS) (C)
Publisher: Ded Good APM (ASCAP)

The Frog Song

Music (originally titled *So Shy* [KPM 263 #6])
composed by Myhill, Richard (PRS) (C)
Publisher: KPM APM (ASCAP)

Knowledge Is the Key—Reprise

Music (originally titled *One Way Street* [BR 484 #3])
composed by: Dowd, Louise (PRS) (C); Abbott, Jeremy (PRS) (C)
Publisher: Bruton APM (ASCAP)

Lyrics for all songs by Sindy McKay
Sheet Music Arrangements by Christy Carew Marshall

Sheet Music and Lyrics Copyright © 2012 Treasure Bay, Inc.
Illustrations Copyright © 2012 Jeffrey Ebbeler
All Rights Reserved

Published by
Treasure Bay, Inc.
P.O. Box 119, Novato, CA 94948

Printed in Singapore

Sheet Music ISBN: 978-1-60115-152-0

Also available:
Script ISBN: 978-1-60115-150-6
Teacher's Handbook ISBN: 978-1-60115-151-3
Music CD ISBN: 978-1-60115-153-7

Visit us online at
www.TreasureBayPublishing.com and www.RockinReadersTheater.com

Performance Rights:

Purchase of a Music CD with Performance Rights and Scripts or a Production Kit of *Paper or Plastic?* includes the nontransferable right for one school to perform the play and music. Purchase of this Sheet Music does not include Performance Rights. To obtain Performance Rights for the music and play, please contact Treasure Bay by phone at 1-800-476-6416 or by e-mail at customerservice@treasurebaybooks.com.

Right to Duplicate:

Purchase of this Sheet Music does not grant any rights to copy or duplicate it. Please don't do it!
For duplicate copies, please contact Treasure Bay at 1-800-476-6416.

Contents

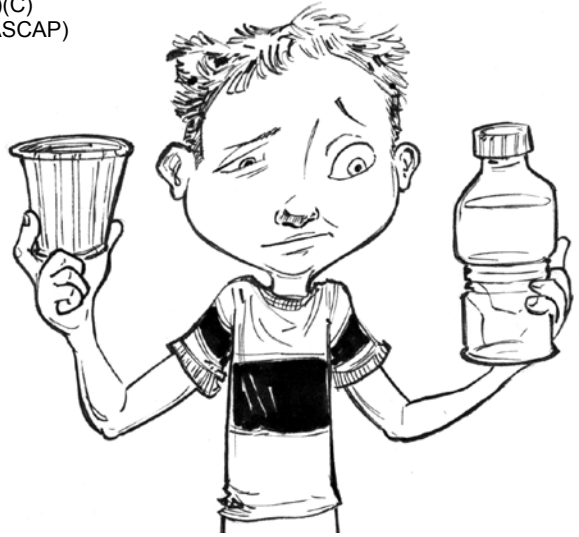
Paper or Plastic?

Sheet Music

Knowledge Is the Key.....	2
We Are All Connected.....	10
Toxic Chemical Song	20
The Frog Song	28
Knowledge Is the Key—Reprise.....	37

Knowledge Is the Key

Lyrics by Sindy McKay
 Music (Originally titled *One Way Street* [BR 484 #3])
 Composed by Dowd, Louise (PRS)(C);
 Abbott, Jeremy (PRS)(C)
 Publisher: Bruton APM (ASCAP)



♩ = 180

EM EM/B EM/C# EM/A EM

Voice

Piano

DRUM FILL

Detailed description: This block contains the first system of musical notation. It features a voice staff and a piano staff. The key signature is three sharps (F#, C#, G#). The voice staff has five measures of rests, with chord symbols EM, EM/B, EM/C#, EM/A, and EM written above. The piano staff begins with a 'DRUM FILL' box in the first measure, followed by a rhythmic accompaniment of eighth and sixteenth notes. The piano part consists of two staves (treble and bass clef).

7 EM/B EM/C# AM Garbage Can: EM EM/A

Voice

Pno.

You think You know

Detailed description: This block contains the second system of musical notation. It features a voice staff and a piano staff. The key signature remains three sharps. The voice staff starts at measure 7 with rests, followed by notes for the lyrics 'You think' and 'You know'. Chord symbols EM/B, EM/C#, AM, EM, and EM/A are written above. A box labeled 'Garbage Can:' is positioned above the EM chord. The piano staff continues the accompaniment from the first system, with notes corresponding to the chords and lyrics.

12 EM/F# EM/A EM EM/A EM/F# EM/A

Voice

the an- swers to the quest- ions You think You know how to make— them lis- ten

Pno.

18 EM EM/A EM/F#

Voice

But you need to go— yeah you need to go— go and get some ed -

Pno.

21 EM/A EM EM/A

Voice

- u - ca - tion 'cause you need to know— yeah you need to know

Pno.

24 EM/F# EM/A BM AM

Voice

— to pass on in - for - ma tion Keep on learn - ing The

Pno.

29 EM BM A/F#

Voice

truth is in — the facts Their trust you're earn - ing and you

Pno.

33 A#7 EM EM/B EM/C#

Voice

know You want the world to see The way the world can be

Pno.

Garbage Can & Plastic Kids & Paper Kids

37 EM/A EM EM/B EM/C# AM EM

Voice

to show them what you be-lie - ve You want the world to see

Pno.

43 EM/B EM/C# EM/A EM/F#

Voice

But first you need The know - ledge ——— 'cause

Pno.

48 EM/A EM Esus4/A Esus4/F# Esus4/A

Voice

that is ——— the key

Pno.

Dramatic Plastic Kid (or all Plastic Kids):

Dramatic Paper Kid (or all Paper Kids)

54 *(sings to Pat)* *(sings to Jesse)*

EM EM/A EM/F# EM/A EM EM/A

Voice: You have a good point now learn the facts_ a - round - it Ex-plore get proof

Pno.

Plastic Kids and Paper Kids

60 EM/F# EM/A EM EM/A EM/F#

Voice: then tell us where_ you found it Now you need to go yeah you need to go_ go and get some ed -

Pno.

65 EM/A EM EM/A EM/F# EM/A

Voice: u - ca tion Cuz you need to know yeah you need to know_ to pass on in - for - ma tion

Pno.

Garbage Can & Plastic Kids & Paper Kids

70 BM AM BM

Voice: Keep on learn - ing The truth is in_ the facts Their

Pno.

75 A/F# A#7 EM EM/B

Voice: trust you're earn - ing and you know You want the world to see The way the

Pno.

80 EM/C# EM/A EM EM/B EM/C AM

Voice: world can be To show them what you be - lie - ve You want the

Pno.

86 EM EM/B EM/C# EM/A EM/F#

Voice

world to see But first you need The know- ledge — 'cause

Pno.

92 EM/A C#m AM

Voice

that is — the key

Pno.

98 F#m EM/G# EM/A EM EM/B

Voice

You want the world to see The way the

Pno.

104 EM/C# EM/A EM EM/B EM/C# AM

Voice

world can be to show them what you be-lie - ve You want the

Pno.

110 EM EM/B EM/C# EM/A

Voice

world to see But first you need the

Pno.

114 EM/F# EM/A EM

Voice

know - ledge 'cause that is the key

Pno.

We Are All Connected

Lyrics by Sindy McKay
 Music (Originally titled *Friends Forever* [KPM 743 #27])
 Composed by Lane, Marc (PRS)(C);
 Hatwell, Greg Charles (PRS)(C)
 Publisher: KPM APM (ASCAP)



♩ = 150 **DRUM INTRO** **Orangutan One (spoken): We can't become extinct!**

Voice

♩ = 150 **Orangutan Two (spoken): No Way!**

Piano

Orangutan One:

6 DM GM

Voice

Orangutan One & Orangutan Two: We're adorable! We live with our friends in the for - est

Pno.

11 DM Orangutan Two: GM

Voice

Pno.

15 Bmin Orangutan One & Orangutan Two: F#min

Voice

Pno.

19 GM CM Bmin F#min

Voice

Pno.

23 CM AM **Chorus:** DM GM

Voice: You know we're gon-na all dis-ap-pe - ar! Come on Come on We _____ are all con - nec - ted

Pno.

27 **Orangutan One & Two:** Bmin AM **Chorus:** DM GM

Voice: And we need to be _____ pro - tec - ted Come on Come on We _____ are all con - nec - ted

Pno.

31 **Orangutan One & Two:** Bmin AM **Chorus:** DM GM

Voice: Don't let us be _____ neg - lec - ted Come on Come on We _____ are all con - nec - ted

Pno.

35 **Orangutan One & Two:** Bmin AM **Chorus:** DM GM

Voice: And we need to be— pro - tec - ted Come on Come on We— are all con - nec - ted

Pno.

39 **Orangutan One & Two:** Bmin AM **Chorus:** CM GM AM

Voice: Don't let us be— neg - lec - ted Help to keep us all pro - tec - ted—

Pno.

43 **Orangutan One:** DM DM

Voice: now_ It starts with the

Pno.

48 Orangutan Two:

GM DM

Voice: rain and the sun - shine Plants grow we_ eat and it's all mine Car - ni - vo - rous

Pno.

52 Orangutan One & Two:

GM Bmin F#min

Voice: an - i - mals eat us With - out a lot of both - er and fuss They call it an e - co - sys - tem

Pno.

57 GM CM Bmin F#min

Voice: Na - ture's way_ got to trust her wis - dom Though it seems like a strug - gle and a big strife

Pno.

61 CM AM **Chorus:** DM GM

Voice: You know it's just the cir-cle of life!— Come on Come on We— are all con-nec-ted

Pno.

65 **Orangutan One & Two:** Bmin AM **Chorus:** DM

Voice: And we need to be— pro - tec - ted Come on Come on We—

Pno.

68 GM **Orangutan One & Two:** Bmin AM **Chorus:** DM

Voice: — are all con-nec-ted Don't let us be— neg - lec - ted Come on Come on We—

Pno.

72 **GM** **Bmin** **AM** **Chorus: DM**

Voice: — are all con - nec - ted And we need to be — pro - tec - ted Come on Come on We —

Pno.

76 **GM** **Bmin** **AM** **Orangutan One & Two:**

Voice: — are all con - nec - ted don't let us be — neg - lec - ted

Pno.

79 **Chorus: CM** **GM** **AM** **DM**

Voice: Help to keep us all pro - tec - ted — now —

Pno.

Orangutan One & Two:

82 B^bM FM CM GM

Voice

When the last tree falls and the rain - for - est is gone

Pno.

87 B^bM FM AM AM

Voice

Go and try to find or ang - u - tans you won't find one!

Pno.

Chorus:

91 DM GM Bmin AM

Voice

Come on Come on!

Pno.

95 DM GM Bmin AM DM

Voice: Come on Come on We are all con-nec-ted Come on Come on We

Pno.

100 GM Bmin AM Chorus: DM

Voice: are all con-nec-ted Don't let us be neg-lec-ted Come on Come on we

Pno.

104 GM Bmin AM Chorus: DM

Voice: are all con-nec-ted And we need to be pro-tec-ted Come on Come on We

Pno.

108 GM Orangutan One & Two: Bmin AM Chorus: DM

Voice: — are all con-nec - ted Don't let us be— neg - lec - ted Come on Come on We—

Pno.

112 GM Orangutan One & Two: Bmin AM

Voice: — are all con-nec - ted And we need to be— pro - tec - ted

Pno.

115 Chorus: CM GM AM DM

Voice: Help to keep us all pro - tec - ted— now—

Pno.

Toxic Chemical Song

Lyrics by Sindy McKay
 Music (Originally titled *Loose Cannon* [CDGMI 7600 #22])
 Composed by Knight, Darcus (PRS)(C); Joy, Otis (PRS)(C)
 Publisher: Ded Good APM (ASCAP)



♩ = 90

Plastic Kid One:

Chords: Amin⁹ Amin/G Amin/F Amin⁹ Amin/G Amin/F

Voice: Check it out Ch-ch-ch-check it out

Piano: [Musical notation for piano accompaniment]

Amin⁹

5 Plastic Kids:

Chords: Amin/G Amin/F Amin⁹ Amin/G

Voice: Yo! (what?) Doyou know how it's made? Yo! (what?) and the price that is paid? Yo! Yo!

Pno.: [Musical notation for piano accompaniment]

8 Amin/F Amin⁹ Amin/G Amin/F

Voice Yo! Do you know how it's made? Yo! (what?) We make plas-tic from oil Yo! (what?) We harm the wa-ter and soil

Pno.

11 Amin⁹ Amin/G Amin/F Amin

Voice Yo! Yo! Yo! Do you know how it's made?

Pno.

Plastic Kid One (or One, Two, Three and Four):

14 Amin⁹ Amin/G Amin/F

Voice You re - fine the oil til you get pro-pane then it's cracked in-to some pro-py-lene a

Pno.